

# PRODUCT LAUNCH

**PF**  
PRODUCT FOCUS

Have you seen the newest products in the wood flooring industry? WFB's inaugural Product Launch section makes it easy to find the latest products. All of the following products launched recently or are scheduled to be released in 2021. Does your company have a new product launching this year? Send it to us at [editors@woodfloorbusiness.com](mailto:editors@woodfloorbusiness.com).



## Aacer Flooring

Aacer Flooring now offers its Legends Collection—prefinished, engineered flooring that features low sheen, wire-brush texture and on-trend colors on Northern white oak.  
[aacerflooring.com](http://aacerflooring.com)

## Allwood Floors

Cascade Select+ is a super-thick, 4 mm, wide plank, wire-brushed, select European Oak flooring.  
[allwoodgrp.com](http://allwoodgrp.com)



**WFB  
PREMIUM  
PARTNER**

**SEE OUR  
AD ON  
PAGE 2**



## Absolute Coatings

Absco Grand 1K Wood Floor Finish is a crystal-clear non-yellowing finish that offers the newest Advanced Resin Technology with no catalyst or X-linker for excellent adhesion, flow, leveling and flexibility, the company says. Its unique technology is scuff-resistant, easy to apply and offers water cleanup, the company adds.  
[absolutecoatings.com](http://absolutecoatings.com)

## American Sanders

The American Sanders Legend is an advanced belt sander that offers aggressive cutting capability combined with exceptionally smooth operation that results in a superbly flat floor, the company says. Every system works cohesively to give the operator precise control with consistent results, it adds.  
[americansanders.com](http://americansanders.com)

**WFB  
PREMIUM  
PARTNER**

**SEE  
ISSUE  
INSERT**



**SEE OUR  
AD ON  
PAGE 20**

## Allegheny Mountain Hardwood Flooring

Natural Rift & Quarter Sawn Red Oak is now available in widths of 2¼–10 inches and lengths up to 12 feet and in both solid and engineered.  
[hickmanwoods.com](http://hickmanwoods.com)



## Beno J. Gundlach Co.

The No. 329 "Big Block" Wood Driving Tool is designed to drive glue-down hardwood planks together without damage to the tongue. The head of the "Big Block" stays upright, making it easy to strike and drive multiple rows of hardwood fast, the company says. It has an all-steel body with a plastic bottom that slides easily over wood flooring.  
[benojgundlachco.com](http://benojgundlachco.com)



### Carlisle Wide Plank Floors

Carlisle Wide Plank Floors now offers Winter Light in its Casual Collection 8-Inch Brushed White Oak, available in signature or heirloom grade. The floor's medium white pigments washed over a brushed texture are designed to create visual interest as the stain holds deeper in the open grain, the company says.

[wideplankflooring.com](http://wideplankflooring.com)



### City Floor Supply

City Floor Supply recently launched Mike's Discount Wood Warehouse. The new division's high-quality prefinished solid hardwood floors are available at closeout prices and a variety of species, colors, grades and treatments, the company says.

[mikesdiscountwoodwarehouse.com](http://mikesdiscountwoodwarehouse.com)

### DriTac Flooring Products LLC

DriTac 7200 Crush is a single-component, premium "green" moisture control modified-silane polymer wood flooring adhesive. It offers unlimited subfloor moisture control with no testing required and a lifetime warranty for engineered wood flooring installations. It is easy to clean off the surface of hardwood flooring wet or dry and installs solid plank and more, the company says.

[dritac.com](http://dritac.com)



### Dust Hog Pro LLC

The Dust Hog is a dust-reducing vacuum attachment tool designed for use when mixing powdered materials on job sites. Insert the vacuum hose of most shop vacuums into the Dust Hog, hang it on the rim of the mixing container, turn on the vacuum and begin mixing, the company says. Its proprietary Vortex Suction Technology creates a high-velocity, circular air current throughout the mixing container.

[dusthogpro.com](http://dusthogpro.com)

### Glitsa

Glitsa's Infinity NxG is the next generation of the Glitsa Infinity waterborne line. Infinity NxG continues the durability of Infinity II, and its new formula features a lighter tone, excellent flow and leveling, powders well and is LEED v4.1-compliant, the company says. It is easy to use and is available in gloss, semi-gloss, satin and matte sheens, the company adds.

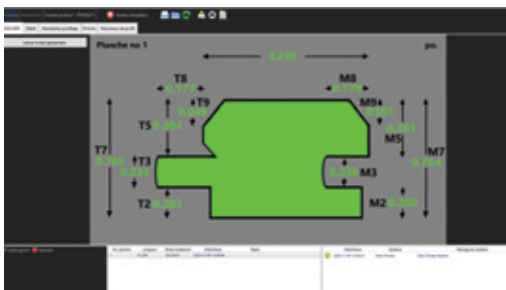
[glitsa.com](http://glitsa.com)



### EBI Electric

The new EBI profile scanner measures any wood board dimension differences at the output of an end matcher or a planer. The EBI profile scanner ensures uniformity of each wood board and alerts of any misadjustment of the end matcher or planer according to tolerances. It can be combined with other EBI scanners.

[ebielectric.com](http://ebielectric.com)



### Fuzion Flooring

The Castello engineered hardwood collection is designed after places that stood the test of time with grace and elegance and is available in both classic and contemporary colors.

[fuzionflooring.com](http://fuzionflooring.com)

### Graf Brothers Flooring

Graf Brothers announces the 2021 launch of its new Rift & Quartered White Oak engineered flooring collections. The collections are made in the United States and will be manufactured on new state-of-the-art, custom production equipment not yet available on today's market, the company says.

[grafbro.com](http://grafbro.com)

SEE OUR  
AD ON  
PAGE 29



### Graf Custom Hardwood

Graf Custom Hardwood's Prefinished Collection offers the highest level of protection with Bona High Durability Finishes, giving floors protection against scratches, stains and spills, the company says.

[grafch.com](http://grafch.com)



### Impressions Flooring Collection

The Cape Neddick Series is a 3/8-inch engineered European white oak hardwood flooring product. It is finished with a UV urethane aluminum oxide coating and carries a lifetime warranty for residential use. It may be nailed, stapled, glued or floated; and below, on or above grade.

[impressionsflooring.com](http://impressionsflooring.com)

WFB  
PREMIUM  
PARTNER

SEE OUR  
AD ON  
PAGE 9



### Indusparquet

The Largo collection, a wide-plank, low gloss collection with eight color options, is adding four more options in April 2021. The new additions will be the same 5/8-thick-by-7 3/4-wide format with a 3.2-mm sawn face veneer.

[indusparquet-usa.com](http://indusparquet-usa.com)



### Lignomat

The MC Tracker now records both relative humidity and the moisture content in solid materials—a wood floor, subfloor, drywall and other structural elements of a building. The information is sent by a newly developed transmitting process to a PC, tablet or wherever the user wants to review the information.

[lignomat.com](http://lignomat.com)

SEE OUR  
AD ON  
PAGE 68

### Holloway House Inc.

Quick Shine Disinfectant Floor Cleaner combines streak-free cleaning with antibacterial cleaning action with Hydrogen Peroxide.

[quickshinefloors.com](http://quickshinefloors.com)



### Loba Wakol North America

Wakol Z 631 Leveling Compound is designed for smoothing and flattening interior surfaces prior to the installation of floor coverings. It is pourable or pumpable, is part of the "Connected Systems" warranty program and can be used with all Wakol product systems.

[wakol-usa.com](http://wakol-usa.com)



### Norton Abrasives

Norton Blaze products feature state-of-the-art ceramic grain for an incredibly sharp cut, the company says. Its options now range from cloth belts and rolls in all sizes to edger discs of all varieties to hook-and-loop discs for both random orbital sanders or multi-head floor machines.

[nortonabrasives.com/en-us/markets/floor-sanding](http://nortonabrasives.com/en-us/markets/floor-sanding)



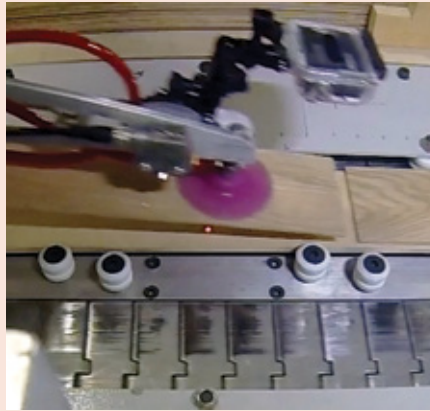
**WFB  
PREMIUM  
PARTNER**

**SEE OUR  
AD ON  
PAGE 5**

### Ogden Group

The Robot Random Length Veneer Feeder provides an automatic method to place random veneer lengths onto a continuously running plywood core such that the veneer joints do not line up closely to the plywood joints. It uses a vision system which communicates with a robot to select veneer and then place it precisely (end to end) onto the plywood core.

[ogden-group.com](http://ogden-group.com)



**SEE OUR  
AD ON  
PAGE 30**



### Oneida Air Systems

The Supercell is a high-pressure, cyclonic dust collection system with high-efficiency separation and HEPA filtration, the company says. It delivers 465 actual CFM and a static pressure rating of 97.8 inches and is ideally suited for dust collection through long runs of a 1-5-inch vacuum rated hose. It is made in the United States.

[oneida-air.com](http://oneida-air.com)

Orion® Pinless Wood Moisture Meters. 10 Times Faster Than Pin Meters.  
FAST. DURABLE. ACCURATE.



888-990-0174 | [WagnerMeters.com](http://WagnerMeters.com)





**Oshkosh Designs**

The Luxe Wood and Metal Parquet features a dark-grain Peruvian walnut selected to contrast with the accents of light aluminum to evoke a contemporary luxury, the company says.  
[oshkoshdesigns.com](http://oshkoshdesigns.com)



**The PaintLine**

PaintLine's heavy-duty shop rack expands from 40 inches to 15 feet using clamp levers. Its removable, 1-inch-diameter tubes of 30 inches lock into place with a turn (no tools required). Tubes can be removed for more vertical space. Its weight capacity is 1800 pounds.  
[thepaintline.com](http://thepaintline.com)

**Panaget**

Panaget added Miel finish to its Timeless Natural Hues collection. It features a gold color with a waxed look to enhance the details in the oak flooring.  
[panaget.com](http://panaget.com)



**Measuring Moisture is our Expertise.**

**Reliable, Accurate,  
Easy-to-Use.**

Concrete Testing F 2170:  
 Reusable RH probes  
 Fail-proof connections  
 Easier and more  
 profitable testing.



800-227-2105  
[www.Lignomat.com](http://www.Lignomat.com)



**Brickman  
Consulting**

- Education
- Expertise
- Experience
- unbiased
- confidential
- independent

- Installation
- Sanding & Finishing
- Consulting
- Inspections
- Research
- Teaching

Since 1978

[howard@brickmanconsulting.com](mailto:howard@brickmanconsulting.com)  
 781.659.7209



**PoloPlaz**

PoloPlaz Primero 275 Low VOC is tougher than most waterborne and moisture cures and VOC compliant nationally, the company says. It delivers overnight drying, even in poor conditions, and reaches 80% cure in 72 hours and can be walked on in 24 hours, the company adds.

[poloplaz.com](http://poloplaz.com)

**WFB  
PREMIUM  
PARTNER**

**SEE OUR  
AD ON  
PAGE 2**



**Premiere Finishing & Coating**

Premiere's custom-color on European White Oak is 8 $\frac{3}{8}$  inches wide with a 2-10-foot length structure. It features a 6-mm sawn face and is available in either Prime or Light Rustic grade.

[prefinishfloors.com](http://prefinishfloors.com)

**ProKnee Corp**

ProKnee introduced upgrades to the AP16 All Purpose Kneepad, featuring the new patent-pending SmartLock Plus Quick Release Buckle. The ergonomic, larger format buckle is easy on the fingers and automatically locks in a perfect strap length with a pull, the company says. The new "Tucked-in Liners" also offer a snug, stay-in-place fit, the company adds.

[proknee.com](http://proknee.com)



**Engineered Flooring  
Production Specialists**

We can help you with your engineered flooring needs!



**WINTERSTEIGER**  
Thin-cutting & Repair



**Precision Thin-Cutting Frame Saws**

for any output volume requirements. We have been the leader in frame saws since 1970.

**Precision Thin-Cutting Band Saws**

in many configurations to meet your exact requirements including future growth in output volume and your product variations. Cutting up to 26" wide with +/- 0.008" tolerance, 0.043" cutting kerf and a surface quality ready for glue!

**TRC Timber Repair & Cosmetics**

With this technology you now can repair larger knots and cracks than before with traditional putty. The void is filled 100 % in depth allowing for no failures, no shrinkage, no cure time, can be handled, stacked or sanded immediately, and this application only takes seconds!

**Jason Fry**, Sales Manager, Phone: +1 801 550 4878, [jason.fry@wintersteiger.com](mailto:jason.fry@wintersteiger.com)  
**WINTERSTEIGER Inc.**, 4705 Amelia Earhart Drive, Salt Lake City, UT 84116-2876

[www.wintersteiger.com/woodtech](http://www.wintersteiger.com/woodtech)



### Revolution Manufacturing

Vanishing Vents are designed to blend with flooring material and are 100% louvered for superior air disbursement and proper space heating/cooling, the company says. They are designed for prefinished engineered hardwood.

[flooringvents.com](http://flooringvents.com)



### Rubio MonoCoat

Pre-Aging is a high-quality, non-reactive pre-treatment that gives wood an aged appearance, the company says. Its application provides a deep color with subtle accents. It is available in 10 shades, ranging from a lighter to a darker smoked look, with colors that can be mixed to create custom looks.

[rubiomonocoatusa.com](http://rubiomonocoatusa.com)

### Seneca Millwork Inc.

Seneca Millwork's SignatureEdge hardwood stair treads are available in a variety of sizes, types, species, and finishes. They feature solid edge-glued construction with two to three glue lines per tread. Pictured are five tread edge style options—double chamfered, single chamfered, eased edge, square edge and bullnose.

[senecamillwork.com](http://senecamillwork.com)



### Superfici America

The Mini Plus Evolution offers superior finishing at 3 mm with four guns, a pressurized cabin minimizing overspray and automatic paper conveyance, the company says. It also features two-sided cabin access for easy cleaning, a laser reader bar for automatic gun activation, and accurate coating application due to linear precision guides with brushless, hyper-smooth motorization, the company adds.

[superficiamerica.com](http://superficiamerica.com)



### Tramex Meters

The Concrete Moisture Encounter X5-CMEX5—is a non-destructive quantitative %MC, Bluetooth and app with a built-in ambient RH sensor and RH and pin probe connections. It can select more than 500 wood species or International Wood Standards. It is fast and accurate, the company adds.

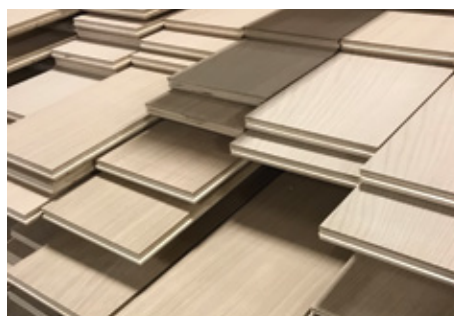
[tramexmeters.com](http://tramexmeters.com)



### Virtu Wood Flooring

Virtu Special Rift is produced from veneer logs and features a uniformity of color and linearity of grain. It is available in widths of 5-9 inches, and lengths running 3-10 feet with an average length of 7 feet.

[virtufloors.com](http://virtufloors.com)



### Vintage Hardwood Flooring

The Red Oak Angora is a new lighter toned color launched for 2020. The prefinished hardwood is available in a variety of textures such as traditional smooth, wire-brushed and sculpted, with widths from 2-1/4-6 1/2 inches. It is made in Canada.

[vintageflooring.com](http://vintageflooring.com)





**Waterlox**

Waterlox's new Universal Tung Oil Sealer and H2OLOX Finishes are low-odor, low-VOC and provide superior performance, beauty and quality, the company says.  
[waterlox.com](http://waterlox.com)



**Wego International Flooring LLC**

Wego International Floors recently launched the Tuscany Collection, an engineered European white oak collection featuring 8½-inch widths and lengths up to 86 inches to reproduce the look of a historic floor, the company says. It has a 3-mm dry-sawn veneer.  
[wegointernationalfloors.com](http://wegointernationalfloors.com)

**WerkMaster**

WerkMaster launched a shape and specification for its S-Seg tooling. The new shape delivers a smoother cut, and the synthetic diamonds have been replaced with GS diamonds. The GS diamonds cut better and stay sharper, the company says. The tool is designed to remove aluminum oxide finishes from engineered wood floors.  
[werkmaster.com](http://werkmaster.com)



French Galerie

45 years of Experience

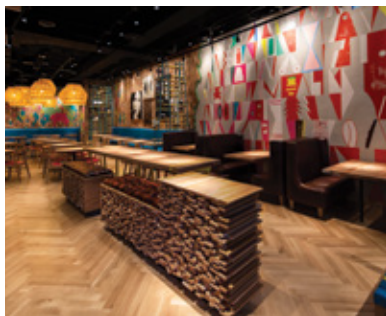
Custom created solid white oak floating staircase, 6 sided, 6' wide and 3-1/2" thick, stained to match our French Galerie's engineered flooring. National is the source for all things wood.

**National Hardwood Flooring & Moulding**  
 14958 Delano St., Van Nuys, CA 91411 800-848-5556  
[www.nationalhardwood.com](http://www.nationalhardwood.com)



**WOCA USA**

Invisible 2K is a high-quality water-based ultra-matte floor finish developed to give light colored wood a raw, bare wood look, the company says. A polyurethane binding agent gives the surface a texture resembling freshly-sanded wood. Invisible 2K is Indoor Climate Labeled, which ensures good indoor air quality, the company adds. [woodcareusa.com](http://woodcareusa.com)



**WoodCo Ltd.**

Texas Post Oak is a dense and stable white oak with interesting grain patterns, color variations and characteristics, the company says. It will finish similarly to standard white oak floors and is a durable option for high-traffic areas. [woodco.com](http://woodco.com)

**Woodwise/Design Hardwood Products**

The new Hardwood Floor Care Cleaning Kit features Woodwise Hardwood Floor Spray & Concentrate cleaner, the easy-to-use swivel head applicator, and two machine-washable, lint-free microfiber cleaning pads. The cleaner is safe, effective, biodegradable and phosphate-free, the company says. [woodwise.com](http://woodwise.com)

**WFB  
PREMIUM  
PARTNER**

**SEE OUR  
AD ON  
PAGE 3**



ENSURE THE QUALITY OF ANY PROJECT OR INSTALLATION WITH...

**DELMHORST  
MOISTURE METERS**

**RUGGED - RELIABLE - EASY TO USE**

[WWW.DELMHORST.COM](http://WWW.DELMHORST.COM) • 877-DELMHORST (335-6467) • [INFO@DELMHORST.COM](mailto:INFO@DELMHORST.COM)

**NWFC**

**National Wood Floor Consultants, Inc.**

Providing the following services for commercial and luxury properties:

**PRE-CONSTRUCTION**  
Consult with Architects, Designers, Developers to ensure flooring compliancy to avert wood floor inspections

**CONSTRUCTION DEFECT & FLOOR FAILURE INSPECTIONS**

**NATIONAL EXPERT WITNESS & PRE-TRIAL CONSULTING**

**INSURANCE CLAIM & RESOLUTION SPECIALIST**

[www.nwfc.net](http://www.nwfc.net)      763-413-7897